

PROCESS MAP: MARINE CONTAINER EXAMINATION PROCESS



1 Industry prepares for import

1 CBSA risk assessment begins



2 Loading



3 Arrival



4 Authorized to proceed



5 Terminal Storage



6 Authorized to move/Delivery

WHO IS RESPONSIBLE?

Industry

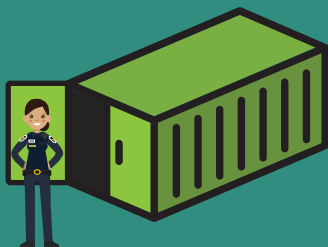
Canada Border Services Agency

May proceed

Proceeds

The vast majority of marine containers will continue along the importation continuum. (From 1 to 6)

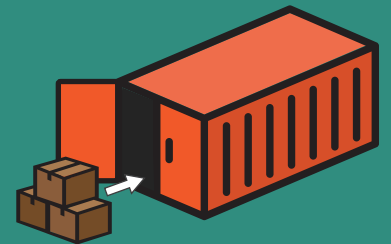
A small percentage of marine containers are selected for examination, which may include one or more types of exams. (From A to C)



B Dockside Exam



A Large Scale Imaging Exam



D Reload

24 hours service standard

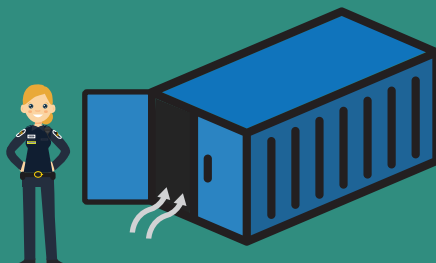


C3 Examination

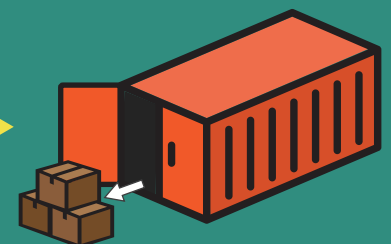
3 day service standard



C Marine Container Examination Facility (Offsite)



C1 Fumigant Testing/Ventilation



C2 Offload



Canada Border Services Agency

Agence des services frontaliers du Canada

Canada